



Trees4All is jointly managed by:

- RECOFTC, a community forest capacity-development organization founded in 1987 that now maintains operations in seven countries in the Asia-Pacific region and is based at Kasetsart University in Bangkok
- ChangeFusion Institute, a social enterprise specializing in the design of social innovations, which created taejai.com, a crowdfunding platform for charity
- Faculty of Forestry at Kasetsart University, Thailand's leading forest management academic institution
- Trees4All Community-based Enterprise is the local-level management committee for the Trees4All project, responsible for promoting the project, recruiting and selecting farmers, and verifying tree data from the farmers before approving payment for tree care in accordance with agreements for the project. Rak Santisuk Group, a community-based informal network focused on the development and promotion of community forests, serves as advisor of the enterprise.

When local people benefit from and own the process of planting and restoring trees, the ecosystem will thrive sustainably. Join us in becoming a tree sponsor by donating 100 Thai baht per tree through Trees4All. You can sponsor more than one tree by increasing your donation.



Each tree is registered in a database that tracks its progress and reports on results, such as the estimated amount of carbon sequestered by the sponsored trees and tree health scores. The information will be reported to tree sponsors once a year for three years.



Supported by:
Federal Ministry
for the Environment, Nature Conservation,
Nuclear Safety and Consumer Protection



The project and this publication are supported by the Global EbA Fund and the Wyss Academy for Nature. The content of this publication is the responsibility of RECOFTC and may not reflect the views of the Global EbA Fund and the Wyss Academy for Nature.

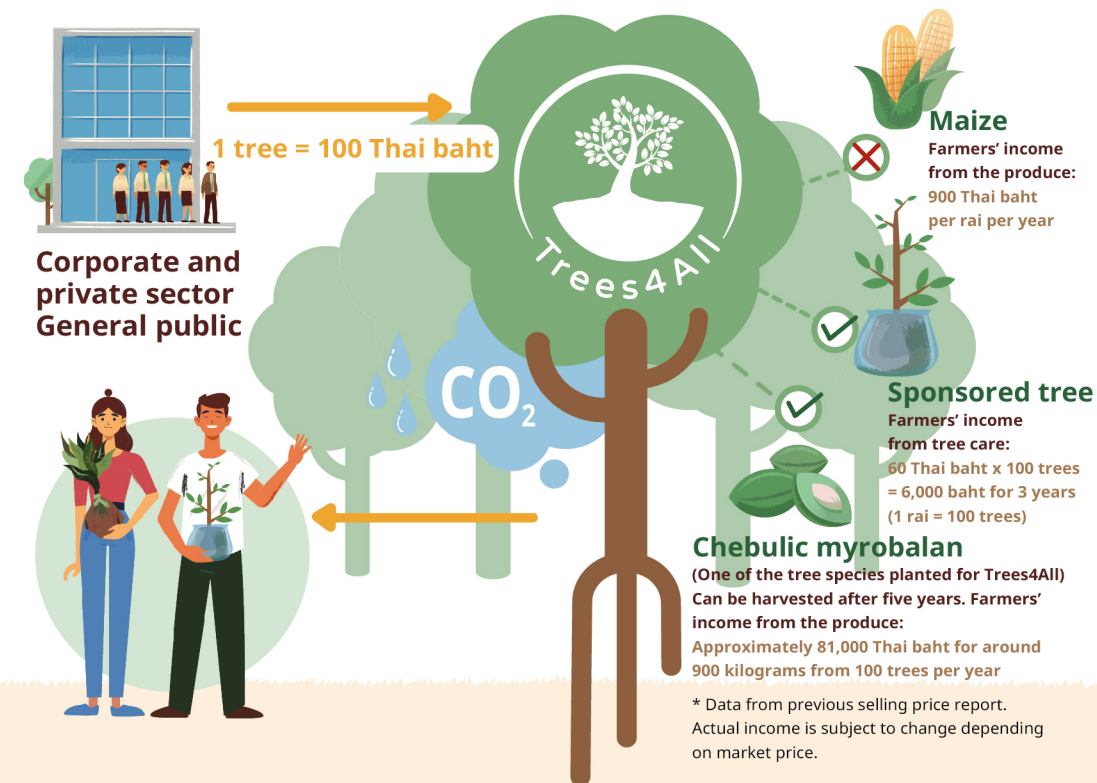


ChangeFusion
GROWING SOCIAL ENTREPRENEURS



Project Implementation

Trees4All



To increase the number of trees and forest space in degraded forest and agricultural areas in Santisuk District in Nan Province during the rainy season from 2022 to 2025, donations will be used to support local farmers who voluntarily participate in the project. By participating, the farmers agree to reduce the size of their monocropping area by replacing their monoculture crops with the donated trees and taking care of these trees. For three years, the farmers have agreed to report on its progress. Your donation also will be used for Trees4All management and to monitor and report the tree planting outcomes to all sponsors.



The amount you donate to sponsor a tree will enable farmers to look after the trees they have planted. The farmers will be able to generate more income from the tree crops and also benefit financially in a more sustainable way than through monocropping. This tree planting will gradually lead to the development of community enterprises that create local jobs. Furthermore, the project contributes to climate resilience of farmers and local people in Nan Province as well as people in urban areas.



You can be sure that the community's ecosystem restored by our trees will be maintained sustainably.



Our online database website trees4allthailand.org registers each tree's data and geographic coordinates. It tracks the progress of the trees through timely measurements and photographs made by the farmers who care for them.

This tree planting project is planting trees for the benefit of all of us. By sponsoring a tree, you can help to restore forests. You can see the progress of the trees and the project on trees4allthailand.org. For more information about the project, please go to www.recoftc.org/en/thailand/projects/trees4all and you can get latest updates and news from RECOFTC Thailand on www.facebook.com/RECOFTCinThailand. If you have inquiries about the Trees4All project, please email trees4all@recoftc.org.



You can donate to Trees4All crowdfunding page at taejai.com/th/d/tree-for-all/ or scan the QR code.

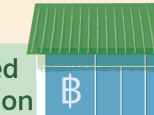
The structure of Trees4All

Trees4All

Target: 20,000 trees and 2,000,000 Thai baht in Santisuk District, Nan Province



Community-based financial institution



Regulations



Trees4All Committee meetings



Savings



Lending



Social welfare



Trees4All Community-based Enterprise



Trees4All

Trees4All farmers will enter their tree data to the database website trees4allthailand.org for tree sponsors to track the progress of their trees.



A farmer can plant up to 100 trees. They will be responsible for taking care of and monitoring the growth of their trees for three years. They will continue to care for the trees over a longer period, but three years is the term for providing data to sponsors on the growth of the trees.



Farmers participating in Trees4All must collect and report the monitoring information for three years. Plot number Land document Personal information Plot location

Order	Type	Growth/height	Geographic coordinates	Tree health scores	Annual payment			
					1	2	3	4



Corporate or the private sector and the general public can track the progress through trees4allthailand.org

Provide minimum support of 100 Thai baht for a tree through taejai.com/th/d/tree-for-all



Trees4All farmers plant and look after the trees, with progress reports for three years

Farmers use the project application to enter data into the database and monitoring system

