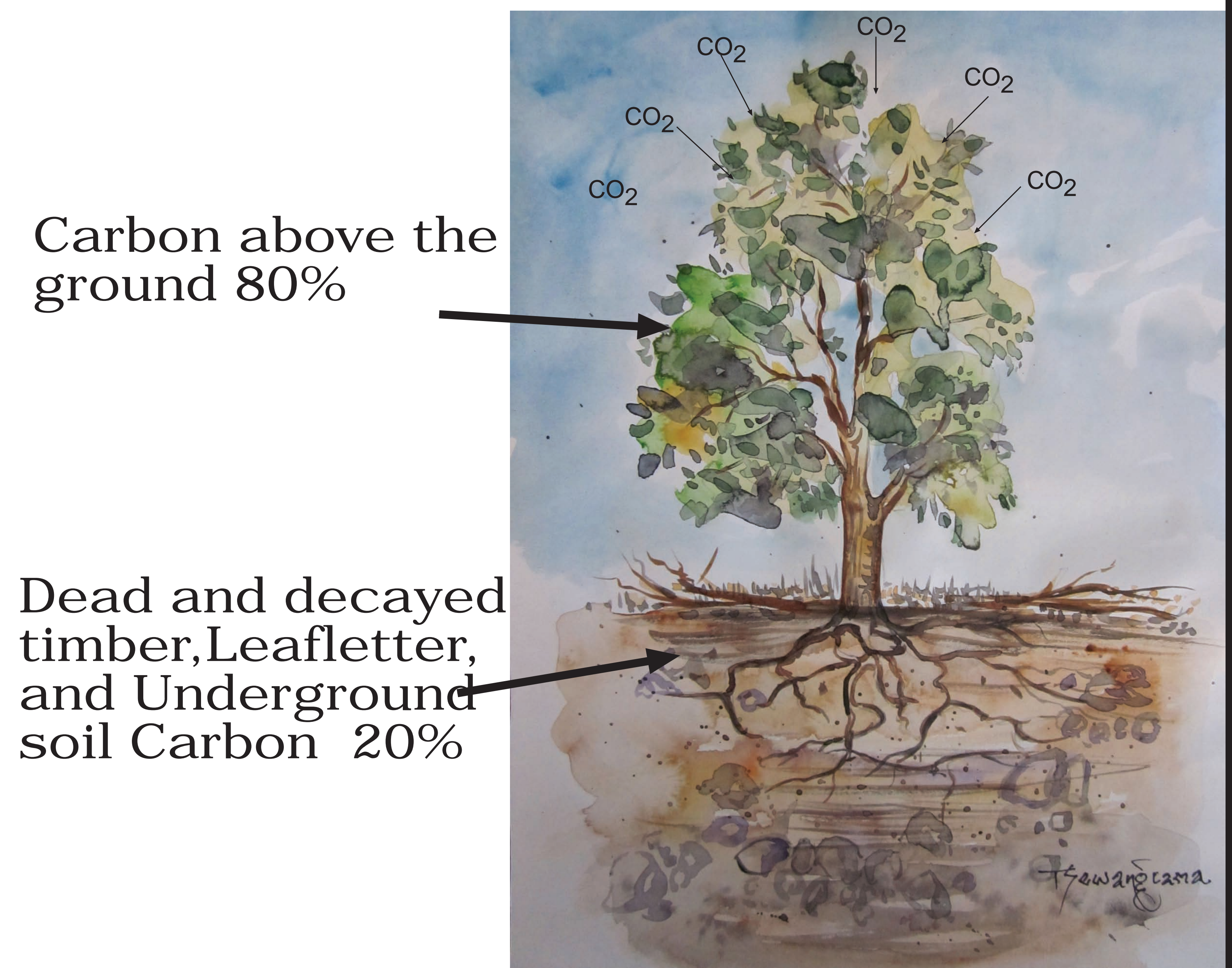


FOREST AS SOURCE AND SINK OF CARBON

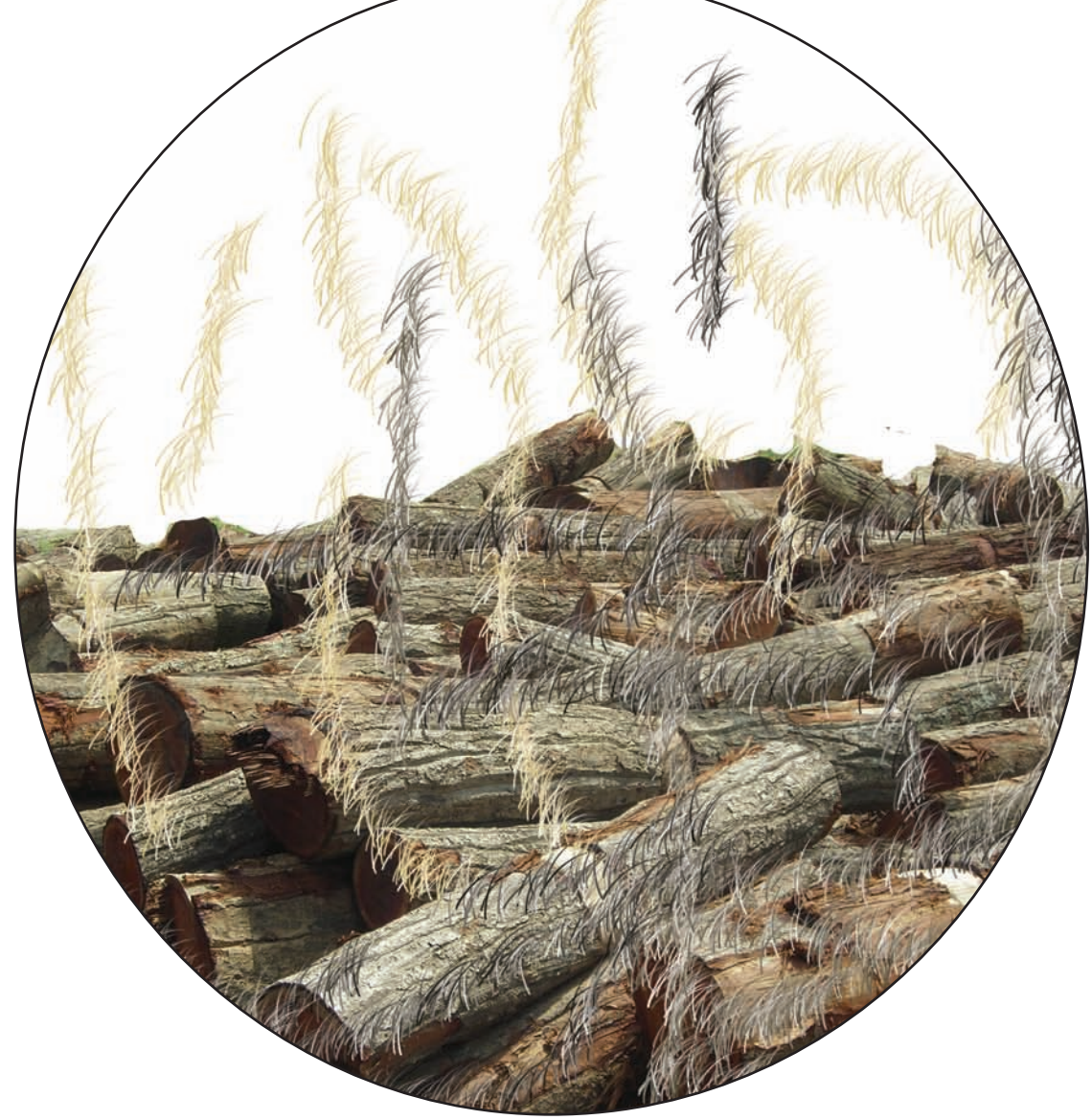
Sink and Storage of Carbon on Forest



Forest Carbon Emission



Forest Fire



Decomposition of Timber



Deforestation



Forest Degradation

Publisher



CONCEPT OF REDD PLUS



Compensation/Iniciative for
Controlling emission from
conservation of forest

Historical responsibility
to reduce green house gaseous



Additionality
Leakage
Parmanency
Sustainablity
Transperancy
Social Security
Environmetal
Security



Less Developed and Underdeveloped Countries

Rich and Industrialised Countries



Control on deforestation



Control on forest degradation

REDD

Plus



Increase in Forest Carbon (Plantation)



Increase carbon stock



Sustainbale forest management

POTENTIALITY OF REDD IN NEPAL



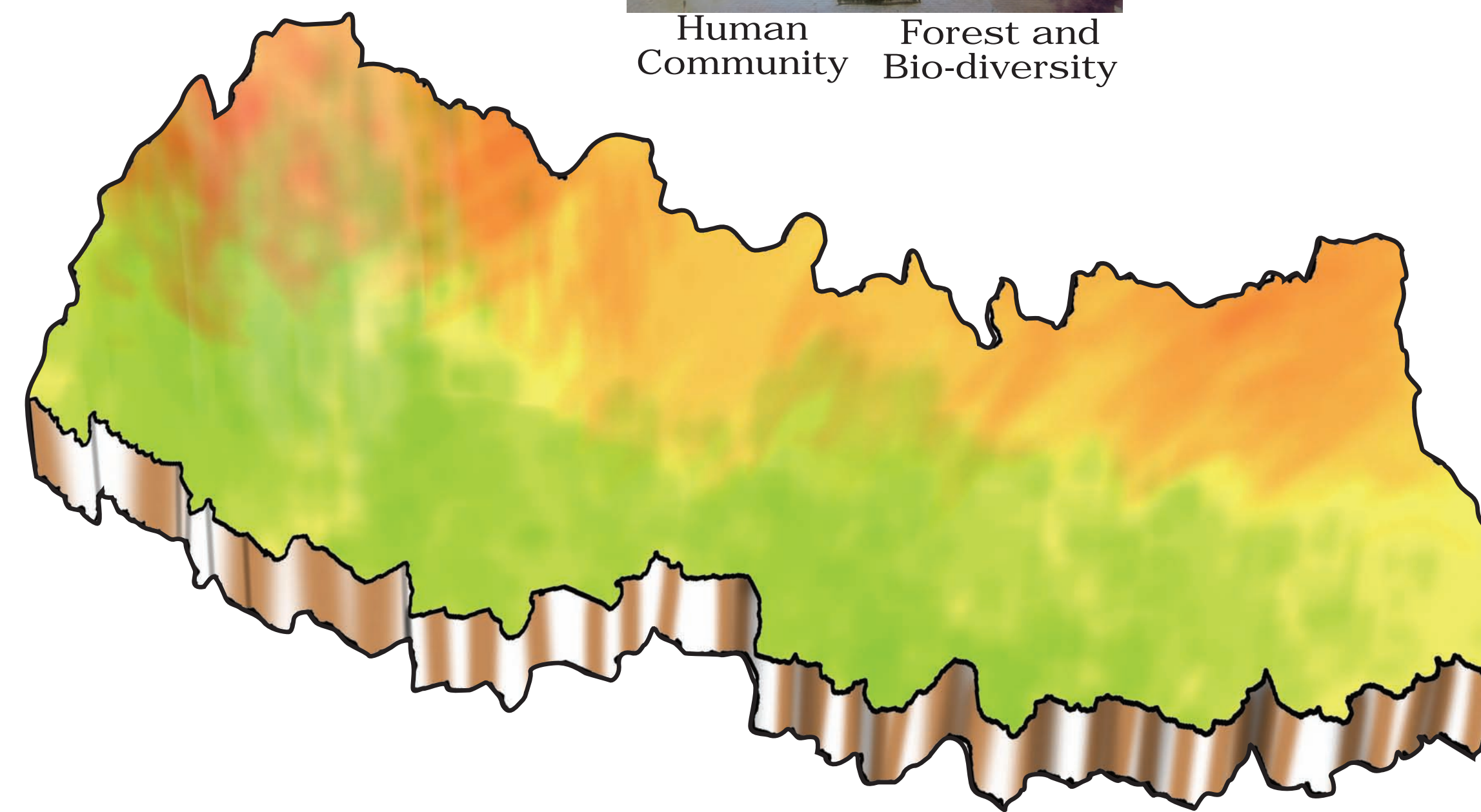
Emphasize on Participatory Forest Management



Human Community Forest and Bio-diversity



Support on Livelihood and Equitable Benefit Sharing



Enhancement on Forest Governance



Institutional and Community Development



Increase on the use of alternative energy



Forest conservation and Sustainable Forest Management

Publisher



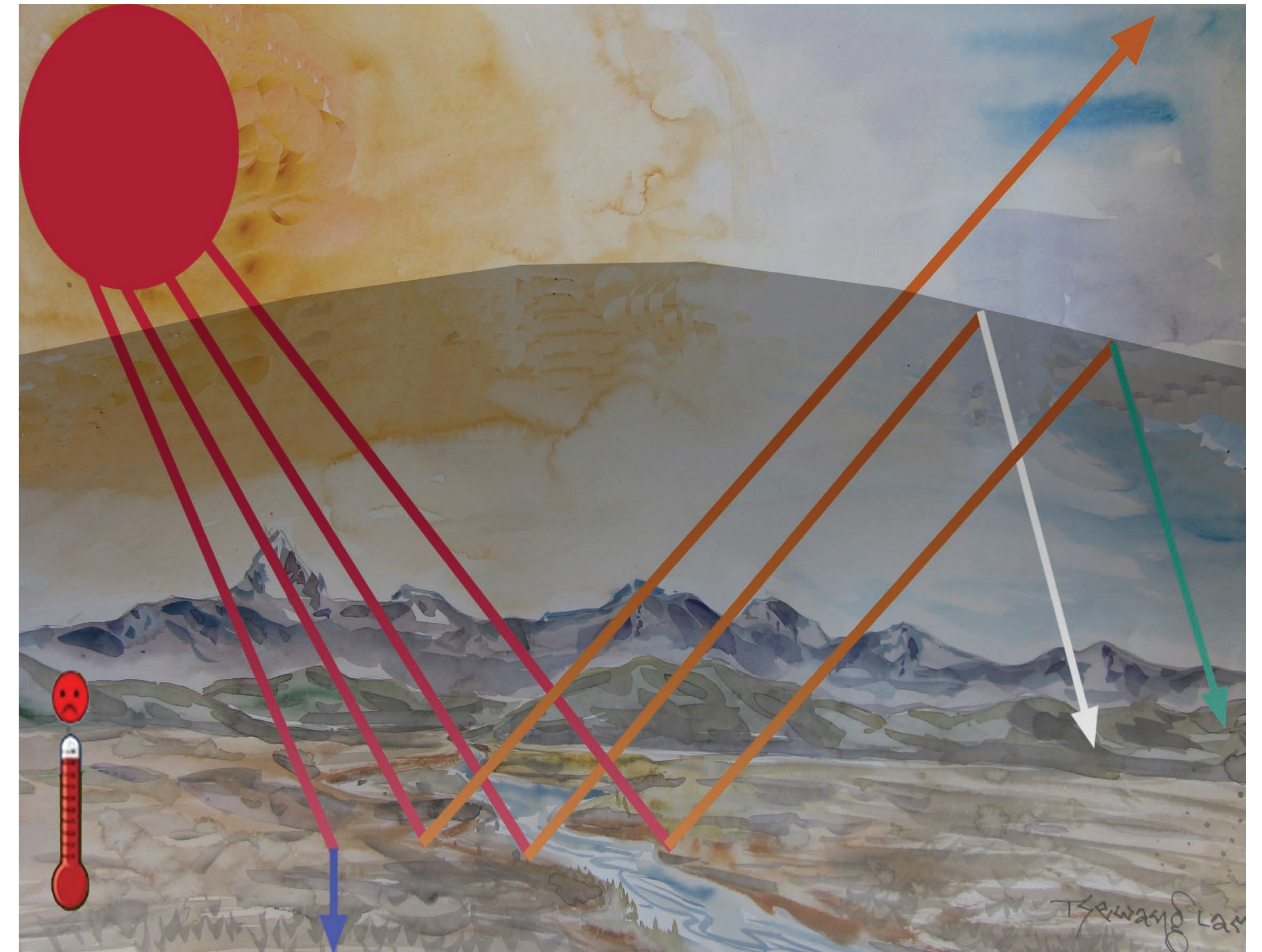
Concept of Green House

Natural Green House Effect

Antropogenic Green House Effect



- | | |
|---------------------|--------------------------|
| 1. Carbondioxide | 2. Methane |
| 3. Perpholor Carbon | 4. Hydropholor Carbon |
| 5. Nitrus Oxide | 6. Sulpher Hexa Phloride |



- | | |
|---|---------|
| 1. Energy Production | 25.50%, |
| 2. Industries | 19.40% |
| 3. Deforestation and forest degradation | 17.40% |
| 4. Agricultural Sector | 13.50% |
| 5. Transport sector | 13.10% |
| 6. Apartments | 7.90% |
| 7. Polluted water and waste | 2.8% |

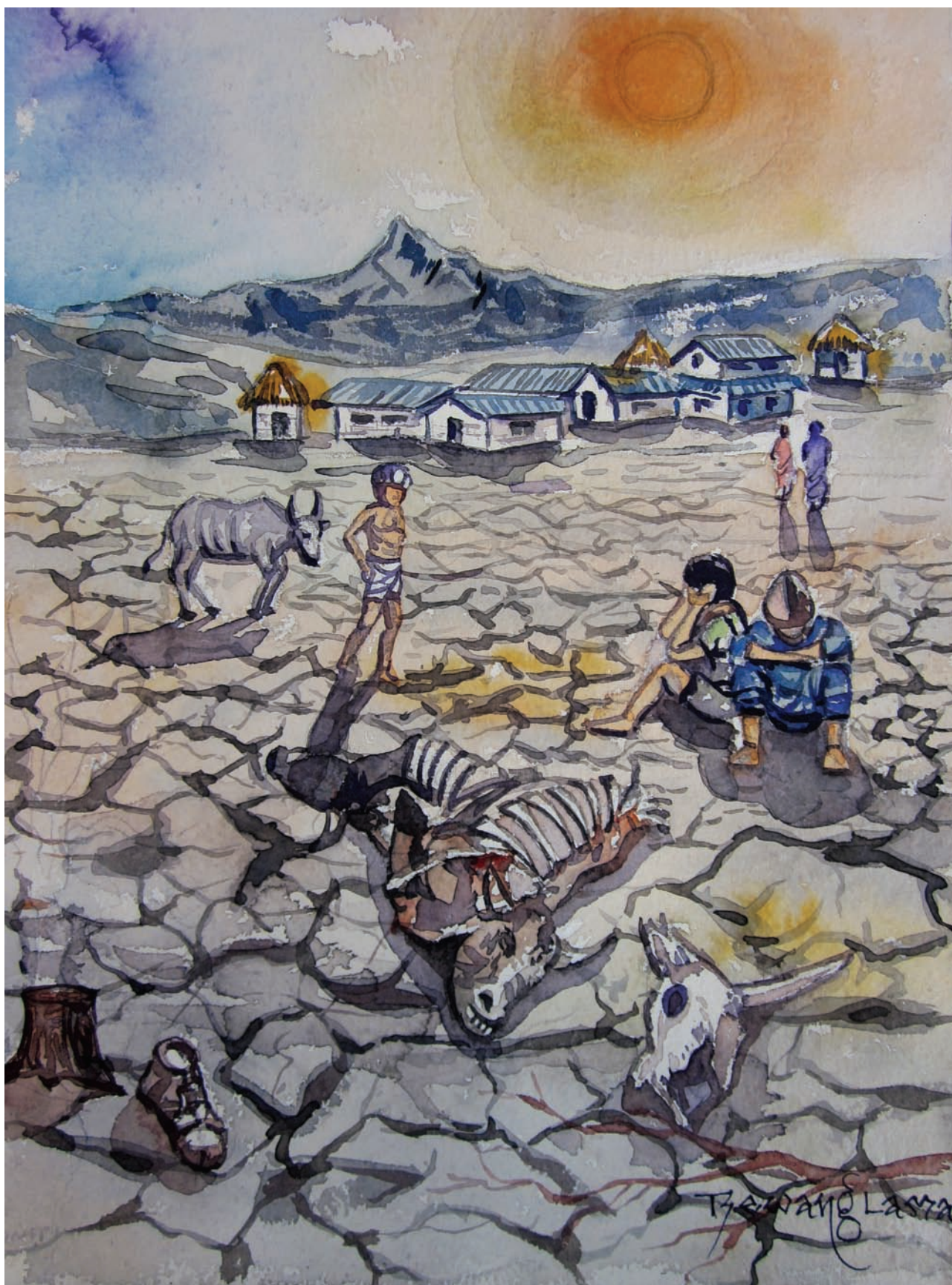
Publisher



IMPACT OF CLIMATE CHANGE



Increase in excessive rainfall, landslide, and drawn



Increase in drought



Drying out water resouces



Degredation on biodiversity and less production of agriculture



Negative Impact on Human Health



Negative Impact on Socio-Economic Condition (Increase in Migration)