

ASEAN-Swiss Partnership on Social Forestry and Climate Change

Phase II (2014-2016)

Project brochure



Supporting ASEAN Social Forestry Network

ASEAN-Swiss Partnership on Social Forestry and Climate Change

Since 2009, Switzerland has been a partner of ASEAN through Swiss Agency for Development and Cooperation (SDC)'s support for the ASEAN Social Forestry Network (ASFN). As an intergovernmental network endorsed by ASEAN Senior Officials in Forestry (ASOF), ASFN promotes social forestry policies and practices. SDC supports ASFN to address interlinked issues of food security, poverty and climate change through the ASEAN-Swiss Partnership on Social Forestry and Climate Change (ASFCC).



Designed in consultation with ASEAN countries, ASFCC has two objectives: 1. Social forestry approaches developed and integrated into the climate change adaptation and mitigation strategies of ASEAN and the Member States; 2. Socio-economic benefits derived from the inclusion of communities, women and vulnerable groups in social forestry and climate change adaptation and mitigation measures.

Objectives of ASFN:

- Promote good policy and practice for social forestry ;
- Establish and strengthen ASFN information and communication systems ;
- Promote and develop support for ASEAN cooperation in social forestry ;
- Support a regional network of "learning sites" that demonstrate social and ;
- Promote the exchange of experiences and knowledge among practicing communities, local governments/local authorities, civil society organisations and the private sector.



ASFCC components of activities

1

POLICY DEVELOPMENT:

Coordinated social forestry framework developed and integrated into ASEAN forest and climate change strategies.

2

KNOWLEDGE SHARING AND NETWORKING:

Local, national and regional knowledge sharing and networking on social forestry and climate change is strengthened and put into use.

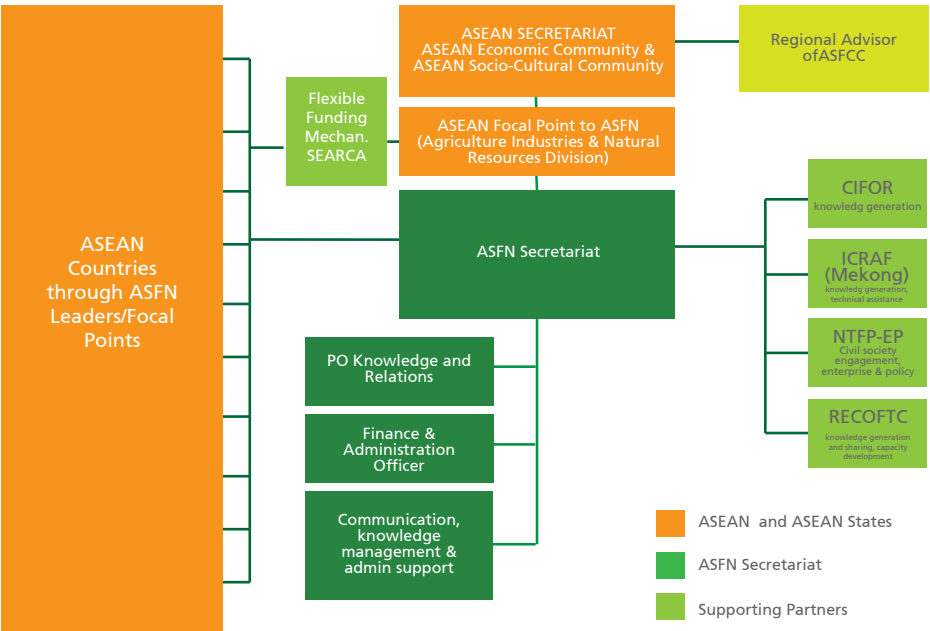
3

LEARNING INTERVENTIONS:

Learning interventions and best practices conducted on social forestry and climate change for broader implementation and policy development.

Supporting organizations

Partner organizations of ASFCC include the Center for People and Forests (RECOFTC), the Non-Timber Forest Products Exchange Programme (NTFP-EP), Center for International Forestry Research (CIFOR), World Agroforestry Center (ICRAF), and Southeast Asian Regional Center for Graduate Study and Research in Agriculture (SEARCA). With diverse strengths and expertise, supporting partners are working together with ASEAN countries to support the development of community forestry in the region.



ASFCC (RECOFTC's component) achievements in ASFCC phase I (2011-2013)

During the year 2011 to 2013 or in the implementation period of ASFCC phase I, various activities to support the development of social forestry in the region have been implemented. RECOFTC, as one of the ASFCC supporting partners, has delivered various 'programs in Southeast Asian region, leading to a better coordinated social forestry framework through dialogues, trainings, knowledge sharing, learning interventions and awareness raisings programs.



- Trained more than 500 social forestry practitioners in the region on selected topics related to social forestry and food security in the context of climate change
- Assisted implementation of participatory action research in selected topics in Myanmar and Thailand
- Shared knowledge through various modalities, such as publications disseminations, learning group workshops, Forum on People and Forests, ASFN Conference, and various community forestry and climate change events
- Strengthened and assisted the development of community forestry working group in Thailand, Malaysia and Myanmar
- Documented lessons learned on community forestry best practice from ASEAN region

Activities for ASFCC phase II (2014-2016)

Besides strengthening capacity of community forestry practitioners in the region, ASFCC also focuses on strengthening the capacity of community forestry practitioners at the national level, by paying attention on specific demands of knowledge of each country.



- Developing capacity of national researchers in conducting participatory action research in the area of social forestry climate change and food security
- Building capacity of social forestry practitioners in South East Asia nationally and regionally through various trainings
- Sharing knowledge and experience on community forestry best practices in the region through study tour program, learning group workshops production and dissemination various communication materials as well as training manuals and various outreach events
- Strengthening and supporting the national working group on social forestry in Cambodia, Lao PDR, Myanmar and Thailand

To learn more about the project and download project publications and activities at <http://www.recoftc.org/site/resources/ASEAN-Swiss-Partnership-on-Social-Forestry-and-Climate-Change-ASFCC-/>

For further information contact:
ASFCC Secretariat
RECOFTC – The Center for People and Forests
Coordinator People, Forests and Climate Change
asfcc@recoftc.org
www.recoftc.org



RECOFTC's mission is to enhance capacities for stronger rights, improved governance and fairer benefits for local people in sustainable forested landscapes in the Asia and the Pacific region.

RECOFTC holds a unique and important place in the world of forestry. It is the only international not-for-profit organization that specializes in capacity development for community forestry. RECOFTC engages in strategic networks and effective partnerships with governments, nongovernmental organizations, civil society, the private sector, local people and research and educational institutes throughout the Asia-Pacific region and beyond. With over 25 years of international experience and a dynamic approach to capacity building – involving research and analysis, demonstration sites and training products – RECOFTC delivers innovative solutions for people and forests.

RECOFTC – The Center for People and Forests
P.O. Box 1111
Kasetsart Post Office
Bangkok 10903, Thailand
Tel (66-2) 940-5700
Fax (66-2) 561-4880
info@recoftc.org
www.recoftc.org

