



## **Scaling Up Social Forestry Implementation in Indonesia: Lessons and Insight**

Presented on the ASEAN Swiss Partnership on Social Forestry and Climate Change  
(ASFCC) Knowledge Sharing

**Dr. Bambang Supriyanto**  
Director General of Social Forestry and Environmental Partnership  
Government of Indonesia

Jakarta, 26 February 2019

# OBJECTIVES OF SOCIAL FORESTRY

**SMART OBJECTIVE** Increasing land allocation for community to gain right in managing forest up to 10% of forest total in Indonesia (equal to 12.7 million ha) through Social Forestry

**SHORT-TERM OUTCOMES** 1. System development and adaptation, enable to provide indicator of management area and development of social forestry business process; 2. Development of social capital; 3. Development of community access to microfinance institutions (BLU), community guidance, and market access for products

**MID-TERM OUTCOMES** 1. Production centre of forest product; 2. alleviation of tenure conflict; 3. forest sustainability

**LONG-TERM OUTCOMES** Establishing more than 10 thousands production centres of forest product community –based aims to increase employment rate and decrease poverty rate in 10 thousands villages around and inside forest



# IMPLEMENTATION APPROACHES



## 1) Business Model: *On-farm -> Landscape Productivity*





# IMPLEMENTATION APPROACHES



## 2) Business Model : *Off-farm -> added value products*



### 3) Supply Chain-based of Industrial Plantation Partnership in Social Forestry Area



## Criteria's and Indicators For Success Social Forestry

CRITERIA	INDICATOR	
	INPUT	OUTPUT
Institutional set-up	Farmer group	Cooperative/village enterprises
Forest Management	Long-term Development Plan	Increased of forest cover
Business Development	<ul style="list-style-type: none"> <li>• Business plan</li> <li>• Village center production</li> </ul>	<ul style="list-style-type: none"> <li>• Increased income</li> <li>• Poverty alleviation</li> </ul>



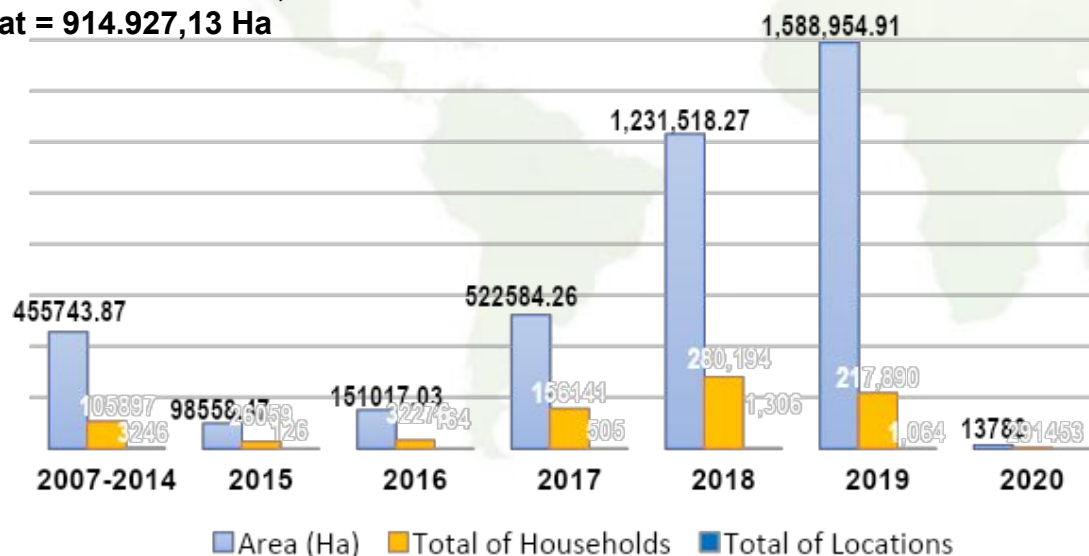
# Realization of Social Forestry Until 17 February 2020

## Realization per Scheme

No	Scheme	Total Area (HA)
1	Village Forest	1.551.601,15
2	Community Forest	757.080,82
3	Forest People Plantation	352.351,68
4	Forestry Partnership	
	A. KULIN KK	425.046,10
	B. IPHPS	25.947,59
5	Hutan Adat	950.129,47
<b>Total</b>		<b>4.062.156,81</b>

**Realization**  
**4.062.156,81 Ha**  
**± 821.371 Households**  
**6.464 Locations**

## Realization per year



NO	Province	Realization		Total of Legal Access (Unit)	Total of House hold
		Allocation	Achievement		
		Area (Ha)	Area (Ha)		
1	ACEH	494.765	208.068,38	47	15.862
2	SUMATERA UTARA	573.146	66.926,09	119	15.138
3	SUMATERA BARAT	633.782	226.948,70	239	126.135
4	RIAU	1.190.483	108.420,36	54	21.420
5	JAMBI	340.839	199.725,73	404	31.260
6	SUMATERA SELATAN	332.196	119.002,95	168	25.153
7	BENGKULU	157.494	64.245,63	123	13.154
8	LAMPUNG	367.069	214.312,71	324	74.238
9	KEP BANGKA BELITUNG	143.503	40.391,82	364	9.330
10	KEP RIAU	197.740	32.695,00	25	3.444
11	JAKARTA	-	-	-	-
12	JAWA BARAT	27.308	27.648,45	97	16.300
13	JAWA TENGAH	33.244	35.449,06	80	17.710
14	YOGYAKARTA	3.383	1.565,88	45	5.005
15	JAWA TIMUR	87.265	138.619,80	272	90.178
16	BANTEN	4.769	16.365,48	26	10.213
17	BALI	16.383	14.390,31	83	44.923
18	NUSA TENGGARA BARAT	312.767	32.797,77	132	22.161
19	NUSA TENGGARA TIMUR	526.582	51.319,34	210	16.037
20	KALIMANTAN BARAT	1.356.549	456.168,30	171	63.488
21	KALIMANTAN TENGAH	1.375.478	256.005,20	177	23.056
22	KALIMANTAN SELATAN	173.505	60.558,29	118	12.939
23	KALIMANTAN TIMUR	386.574	170.171,18	87	7.628
24	KALIMANTAN UTARA	235.997	380.911,27	67	9.118
25	SULAWESI UTARA	118.850	36.756,35	206	4.372
26	SULAWESI TENGAH	366.824	197.958,11	1.209	20.822
27	SULAWESI SELATAN	331.797	293.938,77	589	49.941
28	SULAWESI TENGGARA	306.224	83.051,32	179	13.566
29	GORONTALO	58.513	18.299,01	125	9.863
30	SULAWESI BARAT	95.531	43.229,82	458	3.782
31	MALUKU	231.787	183.728,72	111	22.805
32	MALUKU UTARA	151.284	137.272,83	88	17.194
33	PAPUA BARAT	589.129	51.666,19	36	2.204
34	PAPUA	2.404.952	93.547,99	31	2.932
<b>TOTAL</b>		<b>13.625.710</b>	<b>4.062.156,81</b>	<b>6.464</b>	<b>821.371</b>

- \*)
- Acknowledgment Hutan Adat = 35.202,34 Ha
  - Indicative Hutan Adat = 914.927,13 Ha

**Smart and modern SF Implementation policy -> 1 location of SF, 1 Facilitator. 1,215 facilitator has been recruited for 6,464 location of SF**

**Blue (Early step of social forestry business group)**

1. Legally acknowledged as Social Forestry Enterprise Group (KUPS)
2. Identified potency of the commodities

**Silver (Implementation step of social forestry)**

1. Legally acknowledged as Social Forestry Enterprise Group (KUPS)
2. Identified potency of the commodities
3. Activity Planning (RPHD/RKU/RPH/RKT)
4. Enterprise Unit

**Gold (Advance step of social forestry)**

1. Legally acknowledged as Social Forestry Enterprise Group (KUPS)
2. Identified potency of the commodities
3. Activity Planning (RPHD/RKU/RPH/RKT)
4. Enterprise Unit
5. Enforced commodities' process /tourism facility
6. Obtained capital access (independent/support/loan)
7. Linked to market/ local tourist

**Platinum (Self-standing of social forestry)**

1. Legally acknowledged as Social Forestry Enterprise Group (KUPS)
2. Identified potency of the commodities
3. Activity Planning (RPHD/RKU/RPH/RKT)
4. Enterprise Unit
5. Enforced commodities' process /tourism facility
6. Obtained capital access (independent/support/loan)
7. Linked to market/tourist (local)
8. Linked to market/tourist (regional)



**4,521 (65 %)**



**1,937 (28 %)**



**435 (6 %)**



**47 (1 %)**



# Smart And Modern Social Forestry Monitoring-Android Based

## SOCIAL FORESTRY MONITORING SYSTEM FOR FACILITATION (SIMPING)



## Geographic location display

**LPHN Paru Perak**  
522.4-561-2015, 2015-07-07

Skema	HPHD
Bentuk	Lembaga Pengelola Hutan Desa (LPHD)
Wilayah Administratif	PARUH, SIJUNJUNG, SIJUNJUNG, SUMATERA BARAT

**Narahubung**

Ketua	Iskandar, SE
Nomor Telepon	085211221234

*data yang tampil, bukan data yang sebenarnya, hanya untuk keperluan contoh tampilan, termasuk kategori KUPS pada masing-masing KUPS*

[Lihat Detail](#)

**Filter sebaran:**

**Skema**

☒ HD ☐ HKM ☐ HTR  
☐ KEMITRAAN

**Kategori**

☒ Biru ☒ Perak ☐ Emas  
☐ Platinum

**Potensi**

Agroforestry (2)  
Aren (1)  
Bambu (2)  
Damar (1)

**Provinsi**

Sumatera Barat

[Lihat Hasil](#) [Reset](#)

[Lihat Data Tabular](#)

# Social Forestry Impact



## Social



Table Percentage of Community Change Behavior

	Change Behavior		Total
	No	Yes	
Mandiri	0	50	50
	0,0%	25,0%	25,0%
Tani Manunggal	0	50	50
	0,0%	25,0%	25,0%
Sinar Mulya	0	50	50
	0,0%	25,0%	25,0%
Beringin Jaya	1	49	50
	0,5%	24,5%	25,0%
	1	199	200
	0,5%	99,5%	100,0%

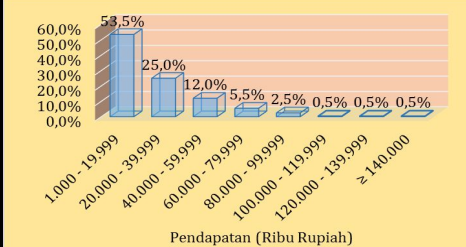
- Sustainable Forest Management by Community
- Responsibility of community toward HKm Area.
- Decrease of Social Problem (Crime)
- Increasing Awareness to protect forest Area



## Economic

- Increasing farmer income within 1-20 million (53.5 %)
- Increasing Labors from 2 to 3 persons per group

Income per Year



Before HKm Permit



Note: (\*) Average Labour : 2 persons

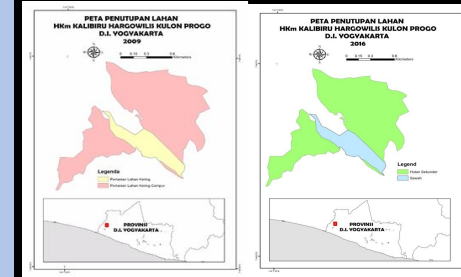


Note: (\*) Average Labour: 3 persons



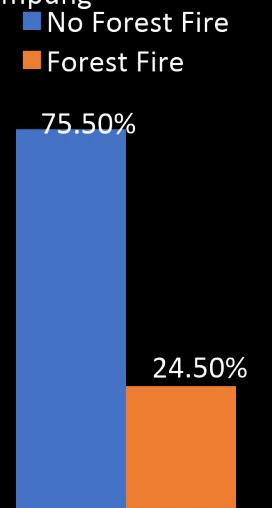
## Environment

Land Cover Map in The HKm Mandiri Kalibiru 2009 and 2016



- Improve Land Cover from agriculture to secondary forest
- Decreasing of forest fire cases in the HKm Area

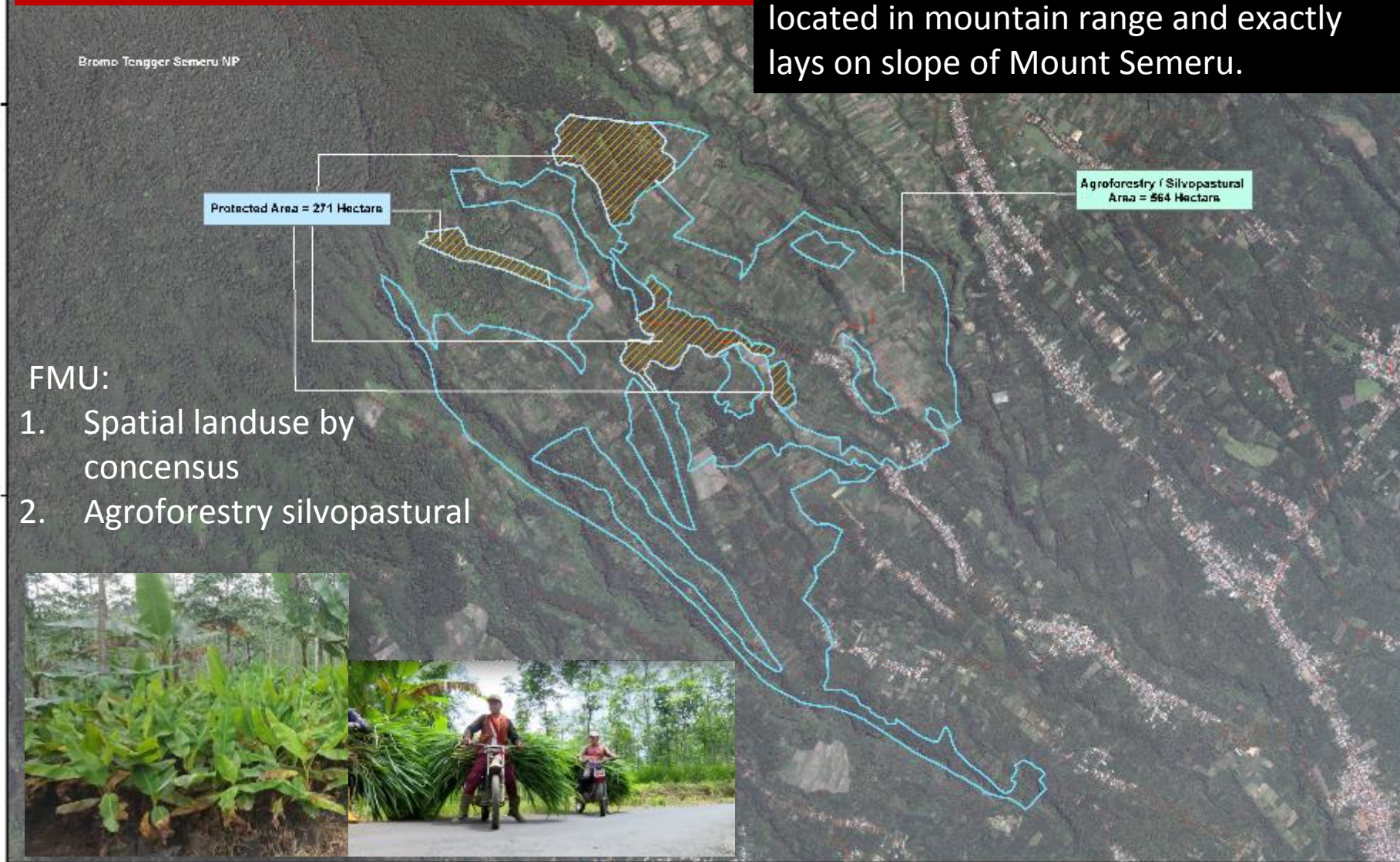
Percentage of Forest Fire Cases in DIY and Lampung





## BENCHMARK SOCIAL FORESTRY IN EAST JAVA: LUMAJANG DISTRICT

Social Forestry for 940 Ha to farmer group Wono Lestari for 367 member is located in mountain range and exactly lays on slope of Mount Semeru.





# BENCHMARK SOCIAL FORESTRY IN EAST JAVA: LUMAJANG DISTRICT



Gajah Grass for livestock's feeding  
Farmers make benefit from forest to plant gajah grass as cow and goat feed in 133 ha which yield average number of grass production around 1,700 sheaf of grass.



Dairy Cows of LMDH Wono Lestari  
Number of cows in Village Burno is 804 individuals and owned by 216 breeders. Those cows produce 5,172 liter milk every year and it is priced Rp 5,300/liter

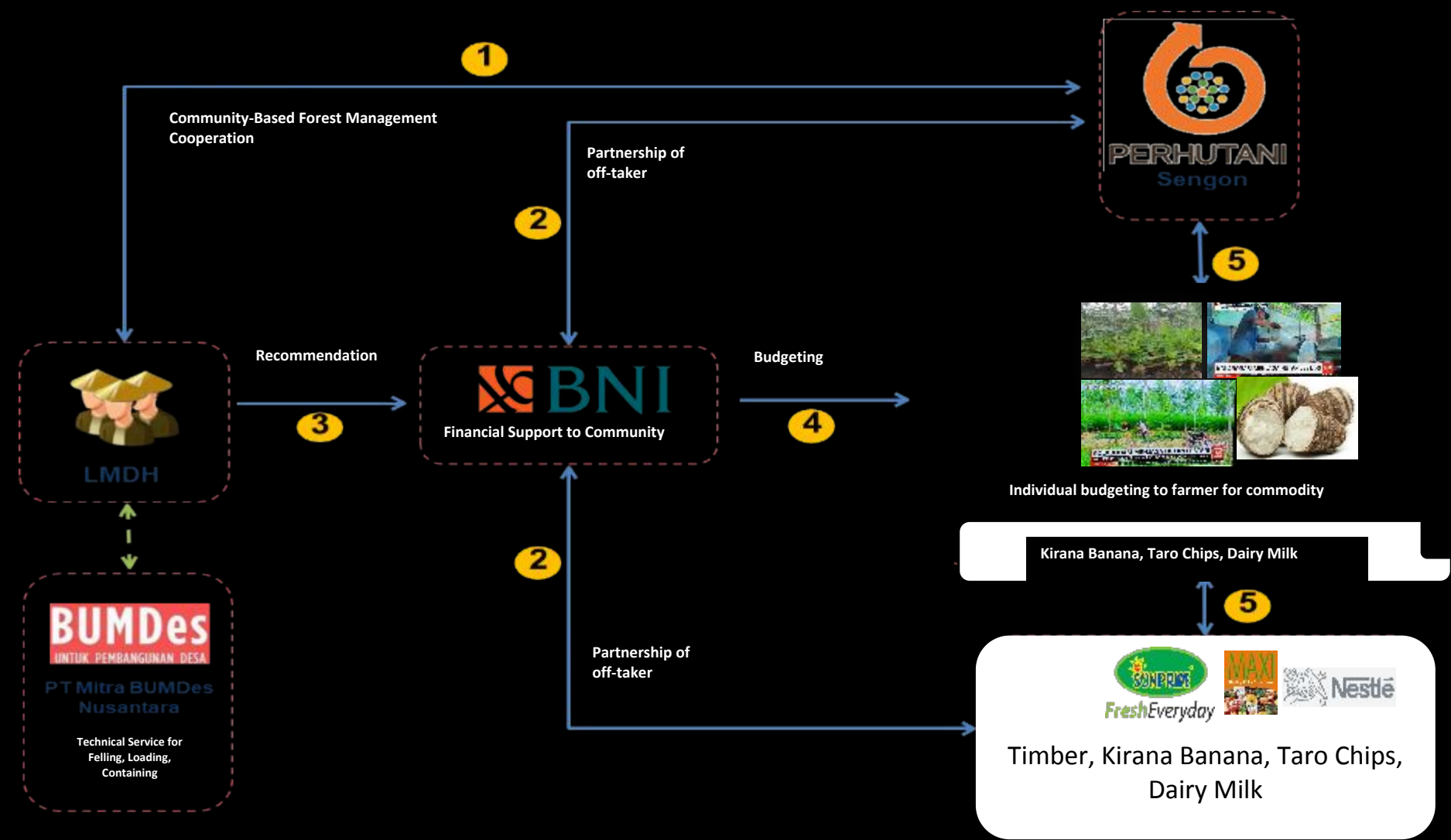






	<b>INCOME OF KTH WONO LESTARI LUMAJANG DISTRICT (564 Ha; 367 Household)</b>			
	<b>SENGGON WOOD</b>	<b>KIRANA BANANA</b>	<b>TARO</b>	<b>DAIRY</b>
<b>REVENUE</b>	Production 300 m <sup>2</sup> /Ha, price IDR 630.000/m <sup>2</sup> Income IDR 189.000.000/ha/6 year	Production 2,5 Ton/Week, Price IDR 6.300/Kg Income IDR 15.750.000/Week	Production 2 Ton/Week Price IDR 3.000/Kg Income IDR 6.000.000/Week	Production 5.172 lt per day Price IDR 5.300/lt, Income IDR 27.411.600/hari
<b>TOTAL REVENUE/ YEAR</b>	IDR 31.500.000/year x 564 Ha = 17.766.000.000/year	IDR 819.000.000/year	IDR 312.000.000/year	IDR 10.052.340.000/year
<b>NET REVENUE/ YEAR</b>	75% (benefit sharing) x 70% (production cost) x IDR17.766.000.000 = IDR 9.327.150.000/Year (56,97%)	90% (benefit sharing) x 70% (production cost) x IDR 819.000.000 = IDR 515.970.000/Year (3,15%)	90% (benefit sharing) x 70% (production cost) x IDR 312.000.000 = IDR 196.560.000/Year (1,20%)	90% (benefit sharing) x 70% (production cost) x IDR 10.052.340.000 = IDR 6.332.974.200/Year (38,68%)
<b>FARMER NET REVENUE/MONTH = IDR 16.372.654.200/Year/367 Households or IDR 3.717.678/Month/Household (US \$ 265/month)</b>				
<b>OFF- TAKER</b>	Perum PERHUTANI 	PT Sewu Segar Primatama 	PT Maksindo karya anugerah 	NESTLE 

# BUSINESS MODEL OF WONO LESTARI SOCIAL FORESTRY, BURNO VILLAGE, LUMAJANG



A close-up photograph of a coffee branch. The branch is covered with several green and red coffee cherries. The leaves are large, green, and have some holes, suggesting they might be eaten by insects. The background is dark and out of focus.

***THANK YOU***